

July/ August 2022

THE MOST UNIQUE AND RELIABLE RESOURCE FOR TODAY'S ELECTRICAL CONTRACTOR

THE ELECTRIC CURRENT

**Klein Tools® Launches New
Stand-up Zipper Bags for Storing
Tools and Small Parts on Jobsite**

LET WINDSOR WIRE'S RAPIDPULL HELP YOU SAVE BIG ON

HOME RUNS!

LET RAPID PULLS SAVE YOU TIME!

- Setup one reel per home run pull.
- Pre-measured per home run.
- No balance material to manage after job.
- True color conductors.
- Reel is pre-marked with panel and box ID.
- No ringing out and tagging.
- LABOR SAVER!



Redefine roadway performance

Introducing RoadMax

Evluma's next generation roadway luminaires deliver uncompromising performance and industry leading glare control. Because essential roads deserve exceptional light.

Lightfair, Las Vegas
June 21-23, 2022, Booth #2546

RoadMax[™]
by **evluma**

evluma.com | sales@evluma.com

TEC Contents • July/August 2022

PG 10	DECKED CargoGlide Literally Extends Truck-Bed Utility
PG 14	vCam Video Inspection Camera Systems
PG 18	Klein Tools® Launches New Stand-up Zipper Bags for Storing Tools and Small Parts on Jobsite
PG 22	Healing with Honor, Felling Trailers Announces 2022 Trailer for a Cause Auction Dates
PG 26	Company Profile: Penn Aluminum
PG 30	Company Profile: Liteline
PG 34	Company Profile: COOLSHIRT SYSTEMS
PG 36	Ad Index



Pg 8

The test tools you need - for the information you require.



From monitoring equipment, tools and test instruments to the need for on-going calibration requirements and the training to understand everything - there is no wonder the maintenance professional is overwhelmed. With the availability of new and upcoming technology, information overload can quickly set in when trying to put together the best maintenance solution. **That's where we come in.** EDE can demystify electrical testing programs, offer support, training programs and the high tech equipment to make your maintenance activities straight forward and motors and generators doing what they are supposed to do - run. We will help you **Find the Way.**



• 970/292-8207 • www.edeinst.com •



Vol. 22 Issue 7/8

PRESIDENT

Glen Hobson
205-441-5591
glen@handfmedia.net

ASSOCIATE PUBLISHER

Steven Goodwin
205-624-2181
steve@handfmedia.net

ADMINISTRATIVE DIRECTOR

Steven Hobson
steven@handfmedia.net

EDITOR

Brandon Greenhill
brandon@handfmedia.net

CREATIVE/ WEB DIRECTOR

Jacklyn Greenhill
jacklyn@handfmedia.net

P.O. Box 1568 • Pelham, AL 35124
Phone: 205-441-5591 • Fax: 205-624-2181
www.theelectriccurrent.com
info@theelectriccurrent.com



The Electric Current™ is published twelve times a year on a monthly basis by Southern Digital Publishing, Inc. *The Electric Current™* is distributed free to qualified subscribers. Non-qualified subscription rates are \$57.00 per year in the U.S. and Canada and \$84.00 per year for foreign subscribers (surface mail). U.S. Postage paid at Birmingham, Alabama and additional mailing offices.

The Electric Current™ is distributed to qualified owners and managers in the electrical industry. Publisher is not liable for all content (including editorial and illustrations provided by advertisers) of advertisements published and does not accept responsibility for any claims made against the publisher. It is the advertiser's or agency's responsibility to obtain appropriate releases on any item or individuals pictured in an advertisement. Reproduction of this magazine in whole or in part is prohibited without prior written permission from the publisher.

POSTMASTER: Send address changes to
Southern Digital Publishing, Inc. P.O. Box 1568
Pelham, AL 35124
PRINTED IN THE USA



Maddox is the one-stop shop for your transformer needs

Founded by a team of industry veterans focused exclusively on the transformer and transformer-related needs of industrial and commercial clients.



Sell

Maddox stocks and sells the highest quality transformers from dry types and padmounts to substations.

Rent

With thousands of units in stock, Maddox rents out transformers for the temporary power needs of customers across North America.

Repair

With shops on both coasts Maddox inspects, tests, and repairs transformers to ensure that they are in top working condition.

Purchase

We offer a great price that includes handling all the transportation and environmental issue.

1-800-270-2011

sales@maddoxtransformer.com

maddoxtransformer.com



SYLVANIA Outdoor Luminaires

Light your way to safety and savings

SYLVANIA UltraLED™ CCT Selectable Wall Packs, UltraLED Mini Wall Packs and the ValueLED™ Area Light are environmentally preferable LED alternatives to conventional luminaires. Available in several wattage/lumen packages, these outdoor luminaires offer up to 74% energy savings. Ideal for building exteriors, outdoor corridors, walkways, stairwells and parking lots. All backed by a 5-year warranty.

LEDVANCEUS.COM





SYLVANIA LED Lamps and Fixtures Light the Way for Portland Transit Services

Providing bus, light rail, and commuter rail transit services to the Portland, OR metro area since 1969, the TriMet transit system has been connecting people with their community, easing traffic congestion, reducing air pollution, and enhancing lifestyles in and around Portland for over half a century.

Serving between 1-2 million riders weekly, the leading transit system has also long been on the forefront of sustainability, as demonstrated by such progressive initiatives as its fleet of 'MAX' electric buses fully powered by renewable energy, as well as its solar panel installations, eco-track project, and investment in the emerging field of regenerative braking.

Thousands of older HID and fluorescent lamps illuminated the many bus and rail garages, yards, and parking lots where TriMet bus and rail vehicles came for repairs, maintenance, engine rebuilds, and body work, and where drivers came to receive their assignments. "We underwent an annual inspection in 2020 at our central bus yard and were informed that we needed to enhance the fasteners in our fixtures to make them code-compliant," shared Karen Powell, TriMet's Director of Facilities Management. "In addition to creating dark spots in our space, our lights were difficult to access and maintain, requiring the scheduling of a bucket truck and the rearrangement of transportation operations. We realized it made no sense to fix those aging fixtures," she said. "We knew that an upgrade to safe, high-quality, and energy-efficient new LED lighting technology would benefit our employees, passengers, and community members alike."

The \$2.4 million upgrade project kicked off September 2020, covered 585,000 square feet of TriMet space, and involved the installation of approximately 10,000 LED products, with around 70% of them being SYLVANIA LED lamps and fixtures from LEDVANCE. The new lighting design involved everything from SYLVANIA LED retrofit strip kits to exterior area lights, wall packs, wide body vapor tights, and linear high bay systems in TriMet's wash bay and fuel house.

"The safety and comfort of our employees is paramount and our new SYLVANIA LED products have delivered everything from improved productivity and safety to reduced energy consumption and better-quality lighting – all of which have truly transformed our space. Our team has commented on how the new lighting has made them feel even more positive in their workspaces. We have also seen a reduction in trespassing incidents due to the improved lighting," TriMet's Powell confirmed.

Visit LEDVANCEUS.COM to learn more.

SYLVANIA 

3-PHASE SURGE PROTECTIVE DEVICES



MODELS	PHASE	VOLTAGE	SPD TYPE	AGENCY	ENCLOSURE	MAX SURGE
ICM530	3-PHASE	DELTA 240VAC or WYE 120/208VAC	TYPE 1 & TYPE 2	UL LISTED	NEMA 4X RATED	150,000 AMP
ICM531	3-PHASE	DELTA 480VAC or WYE 277/480VAC	TYPE 1 & TYPE 2	UL LISTED	NEMA 4X RATED	150,000 AMP
ICM532	3-PHASE	DELTA 600VAC or WYE 347/600VAC	TYPE 1 & TYPE 2	UL LISTED	NEMA 4X RATED	150,000 AMP
ICM533	3-PHASE	DELTA HIGH-LEG 120/240VAC	TYPE 1 & TYPE 2	UL LISTED	NEMA 4X RATED	150,000 AMP

View all ICM single & three-phase Power Protection Products @ www.icmcontrols.com

INSPECT AND LOCATE WITH SPEED, ACCURACY AND CONFIDENCE



**VIVAX
METROTECH**

➤ vCam-6 HD Inspection System

- 9.7" HD Display
- 1TB Hard-drive
- 1080 HD Cameras
- 512Hz Sonde
- Locatable Pushrod
- MP4 Recording format

➤ vCamMX-2 Mini Inspection System

- 512Hz Sonde
- Locatable Pushrod
- High Resolution Cameras
- Direct USB Recording
- MP4 Recording format

➤ vLoc3-Cam Sonde and Utility Locator

- Directional arrow guidance
- Locates sondes and pushrod
- Graphical user interface
- Optional Bluetooth connectivity
- 4.3" Full-color display



vLoc3-Cam

vCamMX-2



Full HD
1080p

vCam-6

Vivax-Metrotech Corporation

Call us for a no-obligation on-site demonstration!

3251 Olcott Street
Santa Clara, CA 95054, USA

1-800-446-3392
SalesUSA@vxmt.com

www.vivax-metrotech.com
vivax_metrotech



**Visit our YouTube channel
to see actual videos.**

***Making perfect
connections has
never been simpler.
In fact, now it's a
SNAP!***

NEW **SNAP Connectors** from Greaves. A revolutionary compression connector concept that gets the job done with just a few turns of a standard wrench!

- ▶ Time-saving, easy installation
- ▶ Superior pull-out strength and conductivity
- ▶ No bulky and costly tools and dies



GREAVES

The Evolution in Electrical Construction is Happening Now



Electrical contractors' scope of work is expanding. The place to find the tools you need to stay competitive is at The NECA Show. It's the industry's largest display of next generation solutions. The future is bright, and we'll prepare you to seize new business opportunities.

REGISTRATION IS OPEN.

Use Code **22UTSC for FREE Trade Show Admission.**



NECA 2022 Austin • Oct. 15–18, 2022

For more information on attending **NECA 2022 Austin**:
T 202-991-6263 • meetings@necanet.org

NECA
NECAconvention.org



SAFELY Lifts Up To 500 lbs!

- Ergonomic
- Portable
- Lightweight
- Meets OSHA & ASME Requirements

Customized Safety Lifting Devices For Any Application

Available in both
CHAIN & CABLE
Configurations



The Sky Hook is your personal safety lifting solution, preventing lifting injuries while saving you both time and money!

800-4-SKYHOOK

800-475-9466 • 208-365-5770

www.skyhookmfr.com





**DECKED CargoGlide Literally
Extends Truck-Bed Utility**



Never climb into a truck bed to retrieve gear ever again

DECKED reveals CargoGlide, a heavy-duty sliding bed platform that makes loading, unloading, organizing, and accessing gear for work and play more efficient. CargoGlide allows owners to store and easily retrieve heavy and bulky items like welders, compressors, heavy-duty tools, refrigerators, spare tires, rescue gear, boxes, and more without crawling into the back of the truck.

With the pull of a lever, CargoGlide rolls forward out of the truck bed from its locked position. Extending past the end of the bed by as much as 100%, CargoGlide puts gear that would be otherwise out of reach at chest level.

"CargoGlide literally extends the floor of the bed out behind the truck, giving full and unrestricted access to gear and cargo," said DECKED VP of Marketing, Greg Randolph. "Truck owners with bed caps will find CargoGlide especially useful, as it enables them to easily and safely use and access every corner truck bed."

More than a standalone storage solution, the CargoGlide sliding tray is designed to complement the DECKED Drawer System. Bolting CargoGlide atop the DECKED Drawer System is the ultimate solution in truck-bed utility. Owners can store heavy equipment on the CargoGlide. Beneath it, they can secure tools and smaller gear inside the Drawer System's two full-length drawers.

CargoGlide is a particularly vital choice for any truck owner with a cap installed over their truck bed. That's because CargoGlide lets owners easily use every inch of their bed with the accessible sliding tray -- eliminating the need to climb into, and around, a height-restricted bed to find the right tool.

DECKED CargoGlide comes in 1,000-, 1,500-, and 2,200-pound payload options, with either 75% or 100% extension of the tray available. The 1,000-lb, 75% extension option is compatible with the DECKED Drawer System, enabling a truly multifaceted approach to organizing and accessing gear.

CargoGlide is available for most full-size and mid-size trucks and cargo vans. Constructed from powder coated American steel and industrial, marine-grade plywood coated with a thermoplastic top sheet, CargoGlide is rugged enough for the harshest work environments. That means it will perform flawlessly on the jobsite as well as the great outdoors. Gear can be easily secured to the CargoGlide by affixing straps to the side rails with infinitely adjustable cargo tie down locations.

CargoGlide is also easy to install — 30 minutes is all it takes. It comes pre-assembled, so installation is as simple as drilling according to the instructions, installing the hardware and bolting it down. CargoGlide is available to purchase online now at <https://decked.com/> as well as nationwide through DECKED's network of 2,500 dealers.

Model	Extension Length	Payload	MSRP
CG 1000	70%	1,000 lbs.	\$1,331.39
CG1000XL	100%	1,000 lbs.	\$2,183.09
CG1500	70%	1,500 lbs.	\$1,722.54
CG 1500XL	100%	1,500 lbs.	\$2,823.06
CG2200XL	100%	2,200 lbs.	\$2,971.46

DIAGNOSE YOUR OWN EQUIPMENT.



Big updates on CASE, New Holland, JCB & John Deere

The **OHV Pro** is our answer to folks needing a stand alone, full featured scan tool for working on Agricultural, Construction, Mining and other Off-highway applications. Brands such as John Deere, Volvo, Caterpillar and CASE are covered. Perform bi-directional controls on hydraulics and special functions, such as injector coding, DPF regens and VGT calibrations.

8" Android Tablet | IP65 Rated | Bluetooth® Wireless | Easy Updates | Remote Technician

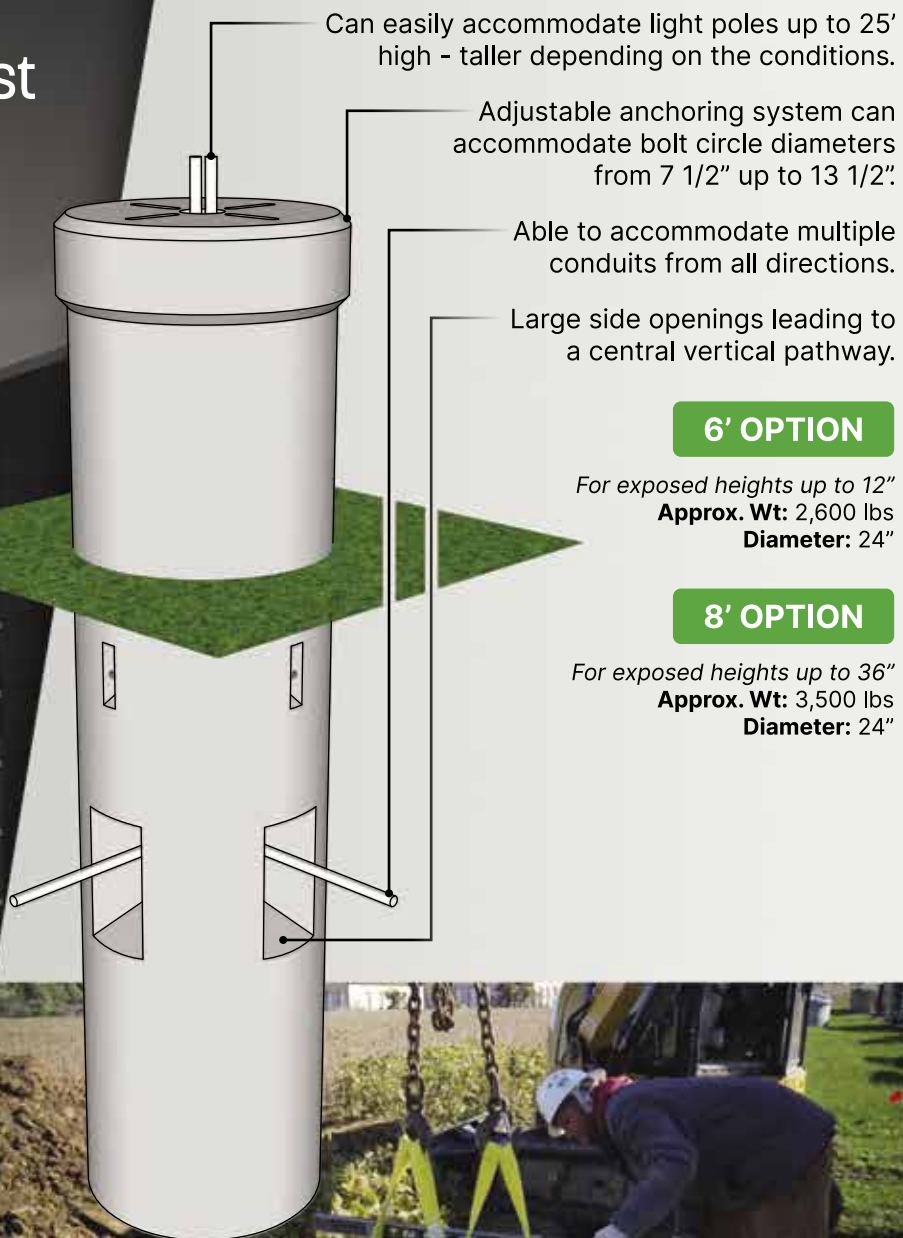


WWW.CANDOINTL.COM
909/CANDO-11(226-3611)



The Future of Precast Light Pole Bases.

Universal Features



Can easily accommodate light poles up to 25' high - taller depending on the conditions.

Adjustable anchoring system can accommodate bolt circle diameters from 7 1/2" up to 13 1/2".

Able to accommodate multiple conduits from all directions.

Large side openings leading to a central vertical pathway.

6' OPTION

For exposed heights up to 12"

Approx. Wt: 2,600 lbs

Diameter: 24"

8' OPTION

For exposed heights up to 36"

Approx. Wt: 3,500 lbs

Diameter: 24"



Scan Here!

LightPoleBase.com

vCam Video Inspection Camera Systems

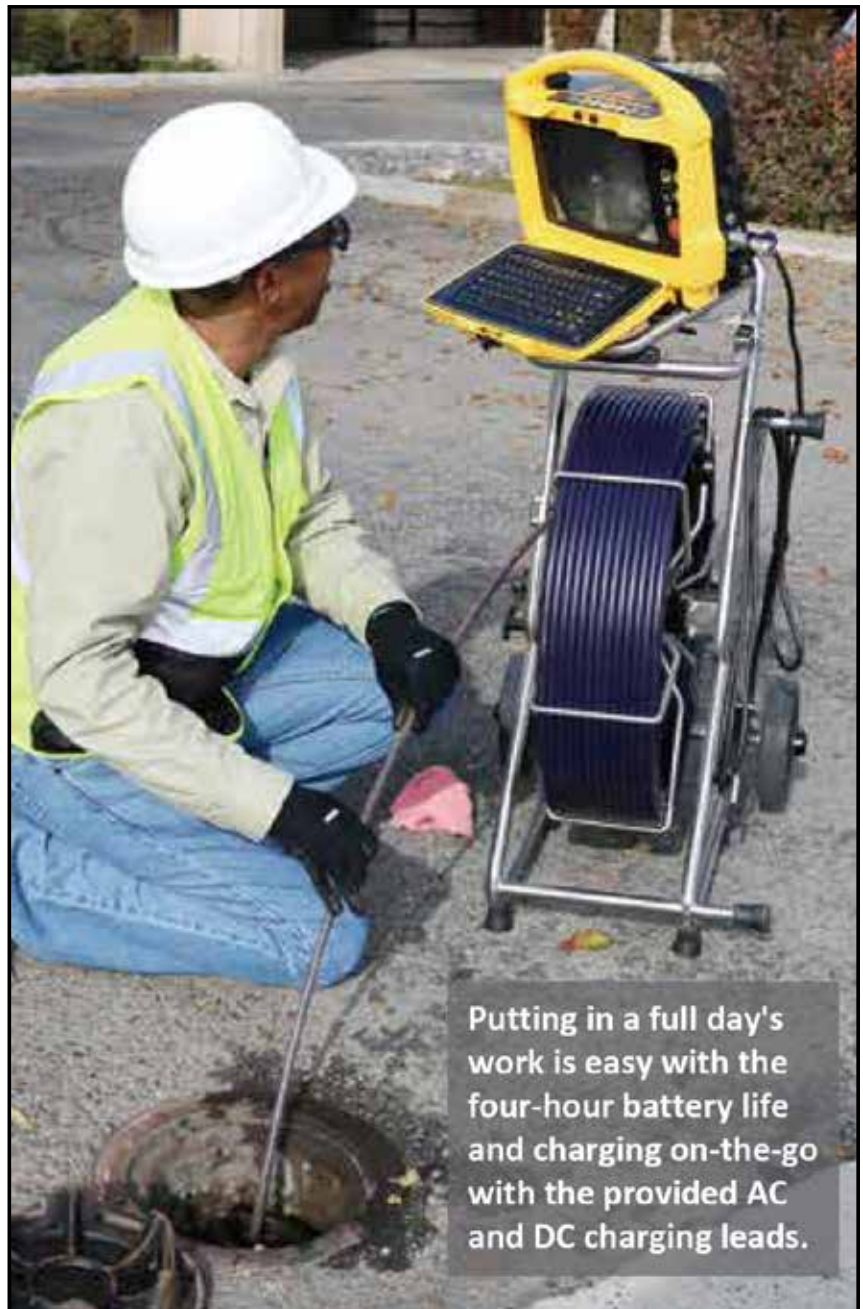
The vCam inspection systems from Vivax-Metrotech allow you to cover a range of inspections, including municipal collection systems, residential plumbing, indoor commercial lines, and lateral lines from two to eight inches in diameter. Our camera systems use the latest technology packaged in a rugged, lightweight, compact profile for the harsh conditions related to sewer lateral inspections.

STANDARD SIZE SYSTEMS

The vCam standard size systems consist of the vCam-6 HD control module and Type-CP reel.

The feature-packed vCam-6 control module has 9-inch daylight viewable HD LCD, AC/DC power sources with a rechargeable battery, 1 TB hard drive, full keyboard for text overlay, internal microphone, one-touch recording and image capture, Wi-fi, and file renaming. The vCam-6 is configured to work with popular LACP software through the Mini-USB port and Video Out socket.

The Type-CP reel is constructed of stainless steel tubing welded together and using gusseted plates in heavy stress areas to prevent the frame from bending. The control module can be mounted on top of the Type-CP reel, or the reel can be used in a vertical position.



"As a safety professional, you always want your workers to have access to leading edge safety tools that improve safety and focus.

Working with **COOLSHIRT SYSTEMS** over the past two years allowed me to help design a tool **by lineman for lineman.**

The **A.R.C. Hybrid Cooling System** by **COOLSHIRT SYSTEMS** allows lineman to remain more focused and less fatigued by reducing their core body temperature in extreme environments, therefore reducing the possibility of unintended accidents."

-James "Jim" Bonner
Compliance Coordinator- Retired
Alabama Power



A.R.C. Hybrid Cooling System

Complete Arc Rated Portable Cooling Solution

Developed in conjunction with major power companies for use in extreme heat conditions, the **A.R.C. Hybrid Cooling System** uses liquid cooling to reduce fatigue, injury, and heat stress related illness.

Designed specifically for use by linemen, the **A.R.C. Hybrid Cooling System** features a compact design with a custom woven strap mounting system. The use of S-hooks offers the versatility of mounting inside or outside of the bucket.

Designed with portability in mind, measuring **6" x 6" x 20"** and weighing in at **less than 10 lbs dry**. The unit is entirely self-contained and built to last with a 20,000 hour pump.



A.R.C. Hybrid Cooling System
2002-0017



COOLSHIRT
TEMPERATURE CONTROLLED GARMENTS

WE HAVE THE ROPE TO GET THE JOB DONE.



BUCCANEER
rope company
Providing strength & stability, with a twist.

Two user interchangeable high definition camera heads fit this reel, giving the user flexibility to handle 3 to 8 inches lines.

MINI SIZE SYSTEMS

The all-in-one vCamMX mini-systems consist of the vCamMX control module and MX mini-reel.

The feature-packed vCamMX control module has 8-inch daylight viewable LCD, AC/DC power sources, a rechargeable battery, an on-screen keyboard for text overlay, an internal microphone, and one-touch recording, JPEG image capture, Wi-fi, video out socket and USB port.

The MX mini reel comprises a stainless-steel tubing frame and carbon fiber drum. Two user interchangeable camera heads fit this reel, allowing the user to handle lines from 1-1/2 to 4 inches. Two camera heads are available, and the camera heads are interchangeable by the user in the field. The smaller camera is the model D18-MX which is fixed position and .70-inch diameter, and the model D26-MX is self-leveling and 1.02 inches in diameter. The MX reel can be purchased without the LCD and used with the existing vCam-6 control module.

All Vivax-Metrotech camera systems are backed up by a full one-year warranty, a camera exchange program, on-site training, and local support through our dealer network. •



Custom Insurance for the Construction Industry

With XINSURANCE, You Get...

- All-In-One Approach
- Agent Friendly
- Limits up to \$10MM
- Property & Casualty
- Professional Liability
- Commercial Auto Liability
(available in most states)
- Products Liability
- Exclusions/Gaps in
Current Coverage & More

Ask us
about our new
coverage option –
Communicable
Disease
Liability



To get your free
custom insurance
quote for the
construction industry,
visit www.xinsurance.com

You can also contact
Logan Fitzgerald directly at
801.304.5562 or
loganf@xinsurance.com

XINSURANCE is powered by Evolution Insurance Brokers, LC ("EIB"), an excess and surplus lines insurance brokerage. XINSURANCE is a DBA of EIB, which is domiciled in and has its principal place of business in Sandy, Utah. This insurance product is offered by an unlicensed surplus lines insurer. The NPN for EIB is 5464658 and CA license number is OH93938.

XINSURANCE



Klein Tools® Launches New Stand-up Zipper Bags for Storing Tools and Small Parts on Jobsite

Klein Tools (www.kleintools.com), for professionals since 1857, introduces new Stand-up Zipper Bags, in a 2-Pack with 7-Inch and 14-Inch sizes, both designed to handle tough jobsite conditions and stand up so tools and small parts can be easily accessed when working.

Stand-up Zipper Bags, 7-Inch and 14-Inch, 2-Pack (Cat. No. 55559)

- Perfect for storing pliers, wrenches, screwdrivers, drill bits and other small tools and parts
- 4 1/2" tall zipper bags come in two sizes:
 - o 14" (36.6 cm) dark gray
 - o 7" (17.8 cm) royal blue



Los Angeles, CA

Always 250+
Specialized Trucks & Equip.
Delivery Throughout the U.S.A.

800.896.2480

MONTHLY RENTALS AVAILABLE



**HOGG-DAVIS HP-650
Cable Pulling Trailer**

Stock # 14176-8

**CHEVROLET Diesel
Texoma TX-245B Digger Derrick**

Stock #14319-8



**FORD Diesel Champion
Cable Scraper
Hi-Speed Cable Removal**

Stock # 14181-8



**Sherman Reilly UnderDawg
Bull Wheel Puller**

Stock # 14549-8

www.alasher.com



- 2" gusseted bottom increases capacity and allows zipper bags to stand up creating easy access to tools
- Aluminum carabiners clip to tool bags or tool belts (not for human support)
- Heavy-duty, water resistant 1680d ballistic weave material
- Reinforced bottom (2520d ballistic weave) to help prevent sharper tools and parts from wearing through
- Durable zippers with string pull make opening and closing the bags easier, even with gloves on

PowerSight®

Power Quality Analyzers & Loggers



Easy to Use & Learn

Buy or Rent Up to 100 Systems

Domestic Tech Support

Wizard & AI Tools Save Time and Eliminate Errors

Renewable Warranties that Include Calibrations

1-2 Day Shipping on Most Orders



Most Popular:
PK3564-PRO System



Made in USA
with US &
Imported Parts

**NETA 2022
POWERTEST**
March 1 • Denver, CO

Come See Us at
Booth #908
for exclusive
offers!

PowerSight.com • sales@powersight.com • 1-925-444-7027

"Trade professionals have to carry a variety of small tools and parts as part of their daily jobsite activities," says Scott Rabe, senior product manager at Klein Tools. "Klein Tools' new Stand-up Zipper Bags are designed to carry all of these small items, and are made of heavy-duty ballistic weave material, with reinforced bottoms to help prevent sharp tools and parts from wearing through. The bottoms are also gusseted to allow them to stand up, giving easy access to tools. On top of all that, the bags come together in a 2-pack, with 7-Inch and 14-Inch sizes, so you have options to choose what works best for your job."

For more information, visit www.kleintools.com/new-products or search for #NewKleins on social media.

www.kleintools.com/new-products



First there was 4 square...
and now the **REVOLUTIONARY 5 Square® Box!!**

You've struggled with 4 Square boxes for years - you know how small, cramped and time consuming they are. Finally, there is a solution that allows you the space you have always needed.

The **5 Square®** Boxes (5" x 5" x 2-7/8") provide up to 88 in³ of interior volume which more than doubles that of most existing boxes on the market.

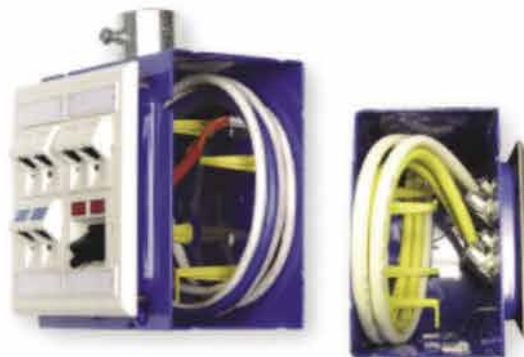
Create a robust and unrivaled infrastructure for the life of your facility with the **5 Square®** Products!

Fire Signal



- TWICE THE VOLUME AS MOST BOXES
- SAVE LABOR...INCREASE PROFITS
- ELIMINATES TROUBLESHOOTING TIME AND COST
- FULLY UPGRADEABLE SYSTEM
- SPECIFIED BY ENGINEERING FIRMS, HOSPITALS, UNIVERSITIES & GOVERNMENT AGENCIES
- AVAILABLE IN ZINC OR RED

Telecommunications



- INTEGRAL CABLE MANAGEMENT
- SAVE LABOR...INCREASE PROFITS
- FACILITATES MIN. BEND RADIUS REQUIREMENTS
- SUPPORTS CURRENT AND EVOLVING SYSTEMS
- SUPPORTS PoE PLUS
- SPECIFIED BY ENGINEERING FIRMS, HOSPITALS, UNIVERSITIES & GOVERNMENT AGENCIES



Healing with Honor, Felling Trailers Announces 2022 Trailer for a Cause Auction Dates

Felling Trailers, Inc. is conducting its tenth annual online auction of an FT-3 drop deck utility trailer to benefit a non-profit organization. Eagle's Healing Nest is the 2022 recipient. Felling Trailers wants to help generate awareness about the invisible wounds of war that our veterans carry. Thus, Felling Trailers manufactured and painted one of its most popular trailers, custom metallic "Patriot Blue" with chrome pinstriping and bears Eagle's Healing Nest's emblem along with its credo "Promises Made. Promises Kept." The online trailer auction will run for six days: August 22nd through August 27th. Several Felling Trailers' suppliers have joined to support Eagle's Healing Nest by sponsoring the trailer build, from lighting to tires to decking. The 2022 Trailer for a Cause sponsors are Trans-Texas, PPG, Dexter, Sealco, Peterson, Industrial Wood (Blackwood), Demco, Pacific Rim, and Metal Crafters/Flexco. One hundred percent of the winning bid will benefit Eagle's Healing Nest!

Founder Melony Butler created the Nest to be a place of peace and healing for veterans struggling from a host of issues ranging from depression, anxiety, PTSD, decades of homelessness, to addictions of many sorts. Veterans come to the Nest to heal with honor from the invisible wounds of war and

Rugged Dependability

STANDARD IN EVERY MACHINE WE BUILD!

Hogg & Davis has been proudly
manufacturing utility line equipment
for more than half a century.



Our trusted products are part
of the fleets and tool cribs of
nearly every investor-owned
power and communications
company in the United States
and Beyond.



HOGG & DAVIS, Inc.

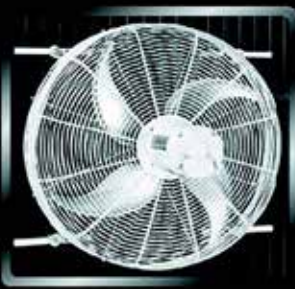
HOGG & DAVIS, INC.

3800 EAGLE LOOP • ODELL, OR 97044

TEL 541.354.1001 • FAX 541.354.1080

WWW.HOGGDAVIS.COM

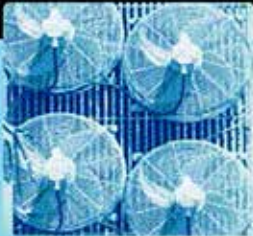
Get Cool!



**Extend
transformer
life!**

**Increase
transformer
capacity up
to 166%!**

- expert technical assistance
- low sound levels
- energy-efficient motors
- large inventory
- one-piece cast aluminum blades
- galvanized or stainless steel guards



p.o. box 187 germantown, wisconsin 53022

262.253.2318

www.krenzvent.com

CIRCUIT IDENTIFICATION GOT YOU DOWN? WHY NOT TRACE OUTSIDE THE BOX!!

**INTRODUCING "CIRCUIT MAPPER"™
THE ULTIMATE IN CIRCUIT LOCATING
FROM TASCO**

*Transmitter
Connects
at Panel*



*LED Readout
Indicates
Specific Circuit*

**Additional Info / Orders
1-800-999-9952**

**Unconditionally Guaranteed
30 Day Trial Available!**

The Circuit Mapper™, model CMT42DS, is the only device of its kind that locates multiple branch circuits of wiring systems with a single transmitter and receiver!

- Determine which breakers are serving specific branches in seconds.
- Digital signal for utmost accuracy.
- Locate up to 84 branches concurrently. *with additional transmitter
- Save time and money by greatly reducing manhours.

TASCO, INC. • 2895 W. OXFORD AVE., #7 • ENGLEWOOD, CO 80110
(303)762-9952 www.tasco-usa.com

time of service. Eagle's Healing Nest is located in Sauk Centre, Mn, on 124 acres with 24 buildings. Originally Minnesota Home School for girls, a veteran's healing center came to life out of an old dormitory.

Melony opened the Eagle's Healing Nest in 2012 with two functional buildings. She stated, "We will build the Nest one branch at a time until it is complete! A place to call home and a place to Heal with Honor!" Since that time, with donations from various organizations, veterans, and volunteers contributing what they can, they have been able to renovate 21 of the 24 buildings on site. When the last of the buildings are complete, the Nest will be able to house 180-200 veterans, service members, and their families.

The Trailer for a Cause auction will start on Monday, August 22nd at 7 am, running for six days, ending Saturday, August 27th at noon at Eagle's Healing Nest's Nest Fest. The Eagle's Healing Nest is a non-profit organization that receives no government funding. Nest Fest is one of a few fundraising events the Nest hosts yearly. Now in its 9th year, the volunteers and residents of the Nest open their doors and hearts to the community with Veteran made crafts, silent auction, bake sale, tours, and new this year, the Trailer for a Cause auction. The online auction can be viewed at <https://www.felling.com/our-company/trailer-for-a-cause/>. Arrangements to be made for pick up at Felling Trailers' manufacturing facility or delivery (freight extra).

www.felling.com/our-company/trailer-for-a-cause/ •



The New Standard for Linemen

At Tallman Equipment, our priority is to set the standard in the electric transmission and distribution industry with an all-inclusive approach to serving our customers. Our vision to deliver a trio of quality, convenience, and reliability is driven by listening and adapting to the needs of our customers. As the industry changes, so does Tallman. As a result, Tallman Equipment has become a unique company within our industry offering a full range of professional services including tool sales, product distribution, rentals, and repair. Tallman is already a trusted name in stringing blocks, cable assemblies, fiberglass, and rope products – and we are excited to announce the addition of our new Rubber Goods Testing Lab.

Our Services Include:

Groundset & Jumperset Manufacturing, Repair & Refurbishing

Transformer Sling Manufacturing & Rope Repair

Battery Power Tool & Equipment Repair

Fiberglass Tool Testing, Repair & Refinishing

Tool & Equipment Rental

Rubber Goods Testing & Refurbishment



Trust **TALLMAN**

www.tallmanequipment.com

Call Toll Free: 877-860-5666

International: 630-860-5666



Company Profile: **Penn Aluminum**

Penn Aluminum entered the electrical conduit market in 2021. After nearly one hundred years in business, and having successfully secured a strong market position in high quality, tight tolerance Aluminum extruded and drawn tubing for North American Automotive, HVAC, Defense and other critical American Industries, Penn recognized the US electrical market offered a strong opportunity for growth and diversification.

After researching the needs of the electrical raceway market throughout 2019, along with gaining knowledge from lengthy discussions with electrical contractors, electrical distributors and long-time electrical industry leaders and insiders, the business decision was made to invest in the production of Rigid Aluminum Conduit and to develop a superior Aluminum Electrical Metallic Tubing (EMT) product.

During the Covid 19 slowdown period of 2020, Penn Aluminum worked to procure the equipment to produce these new product lines. This equipment included highly automated CNC machines to produce quality Aluminum couplings, various Landis threading equipment to support Aluminum conduit production, and high-speed deburring and marking machines for finishing EMT.

The greatest amount of effort during this time was spent employing the engineering and manufacturing experience inherent at Penn Aluminum through the design, extrusion and processing of the Aluminum tube for EMT. Numerous trials of various Aluminum alloys, dimensional adjustments and additional processing resulted in Penn developing an Aluminum EMT product that provides the bending ease and consistency required in application at prefab shops and in the field. Penn purchased and utilized numerous popular bending machines as part of this research and development process.

Though 2020 was a difficult and tragic period for individuals, families and businesses, Penn Aluminum made the most of the situation by gaining UL listings for Rigid Aluminum Conduit (UL6A) and Aluminum



PENN ALUMINUM CONDUIT & EMT

A Marmon / Berkshire Hathaway Company

Aluminum EMT *The Smart Choice*



Lower Cost



Reduced Labor



Lighter Weight



Easier Fabrication



Superior Appearance



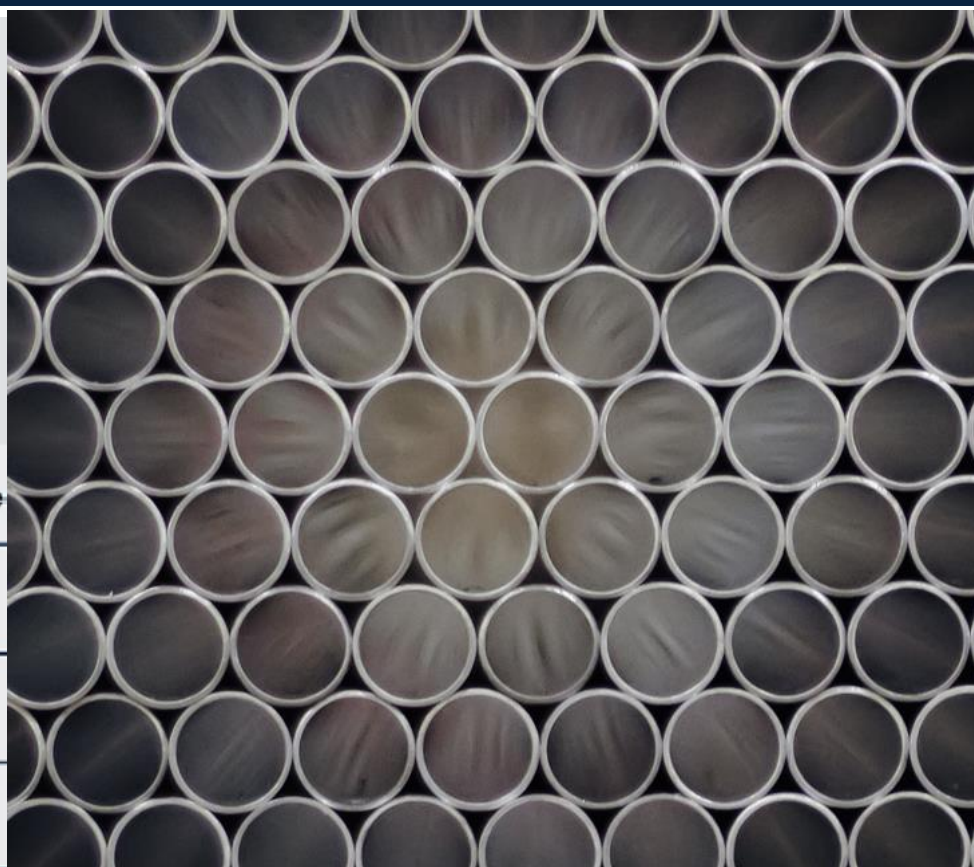
Enhanced Safety



100% Recyclable



Non-Corrosive



The benefits of Penn Aluminum conduit products result in overall electrical project savings, jobsite worker safety and valued environmental sustainability, making them *the smart choice* in the competitive electrical industry.

As part of Marmon Holdings, Inc., a Berkshire Hathaway Company, Penn Aluminum Conduit & EMT carries on the proud 100-year history of Penn Aluminum - a premier manufacturer of aluminum tubing serving critical American Industries.

Proudly Serving America's Heartland



Penn Aluminum Conduit & EMT
1117 North Second Street • Murphysboro, IL 62966
800-445-7366
www.pennconduit.com





Penn Aluminum Conduit & EMT products are manufactured from raw Aluminum billet through machined and finished products in its 265,000 square foot extrusion facility in the "Heartland of America" in Murphysboro, IL, USA.



An ounce of prevention is worth a pound of cure



Line Guard | Pole Guard | BirdBloc
Learn More at **CritterGuard.org**



EMT (UL797A) and preparing to enter the market in 2021 with these products to meet the growing trend of the Electrical Industry. This trend recognizes the benefits of Aluminum conduit usage including overall project savings and employee health and safety.

All Penn Aluminum Rigid Aluminum Conduit and Aluminum EMT products are manufactured from recycled, US-produced, domestic aluminum billet in its extrusion facility in Murphysboro, Illinois. This location provides a central source to service strategic electrical markets throughout the country.

From design to application engineering to manufacturing, Penn Aluminum regards the safety of its employees and the quality of its products as its highest priorities. The constant focus on quality and continuous improvement is recognized through Penn's ISO/IATF 16949 certification - a stringent automotive quality process standard.

As part of Marmon Holdings, Inc., a Berkshire Hathaway Company, Penn Aluminum Conduit & EMT operates with a commitment to maintain a high level of business ethics supporting the important American Electrical Industry along with its businesses and employees.

Penn Aluminum Conduit & EMT is proudly serving America's Heartland with Aluminum Rigid and Electrical Metallic Tubing because it believes the usage of these electrical raceway products is "The Smart Choice" for the Electrical Industry and the markets it serves.

www.pennconduit.com •

800.557.0098 | golight.com

GO LIGHT



DURABLE
VERSATILE



POWERFUL
GUARANTEED

Company Profile: Liteline

Liteline is an industry leader in lighting and making waves specifically in the downlights market. Being known for killing the can with our LUNA fixture, Liteline continues to design innovative products, that are easy to install, all while providing exceptional customer service. Liteline continues to develop leading-edge fixtures especially when it comes to the fire-rated SlimLED Multi.

With the SlimLED MULTI you can easily convert a standard Octagon Box into a recessed downlight and have the capabilities to retro-fit a traditional 4" downlight to a LED fixture. The body of the fixture features on-face magnets that secure the magnetic trims. Each SlimLED MULTI comes packaged with 3 round plastic trims including white, silver, and black.



Upgrade your building wire.



Artist rendering of Copperweld®
Building Wire Products



Theft Deterrent

Metallurgically bonded conductor lowers scrap value, reducing theft incentive.



Code Compliant

NEC Compliant for 600 Volt branch circuit conductors since 1972.



Cost Stable

Reduced exposure to commodity fluctuation, improving your bottom line.



Energy Efficient

Better energy efficiency than standard branch circuit wiring.



Safety Tested

Listed by UL and ETL to industry safety standards per OSHA.



Performance Proven

50 years of safe use with standard circuit components.



COPPERWELD®
BUILDING WIRE



Learn More

Copper where it counts™

Contact us for sales and info:

615-777-8595

buildingwire@copperweld.com
copperweld.com

SlimLED MULTI also combines functionality with design as there is a selectable CCT switch located on the back of the fixture to allow temperature selectability on site. Choose from 27 K, 30 K, 35 K, 40 K or 50 K to get the perfect color temperature to compliment your space. This fixture provides ample lighting with 550 lumens at 90 CRI with dimming capabilities.

Having a Wet Location rating makes the SlimLED MULTI perfect to install in bathroom showers and in outdoor areas such as soffits. Additionally, this fixture is Fire Rated when installed in a Fire Rated octagon box, making it compliant with building codes for multi-unit residential spaces. This high-performance, easy to install downlight is perfect for many applications including multi-Family residences, high-rise, condominiums, apartment buildings, hotels, assisted living homes, and health care. With a built-in driver for easy installation, upgrading to a SlimLED MULTI fixture is the obvious choice!

www.liteline.com •



 **Liteline**

SLIMLEDTMMULTI

**MULTI-APPLICATIONS, SELECTABLE TEMPERATURE,
MULTI-COLORS, NOT SOLD SEPARATELY**

With the SLIMLED MULTI you can easily convert a standard
Octagon Box into a recessed downlight.



Fire-rated when
installed in a fire-rated
Octagon Box



Relax On Payroll Fridays

eMarsinc.com
Ph: 480-595-0466

***e-* Mars, Inc.**
"Compliance at your Fingertips"

- 5 Minute Friday Payroll
- Internet based
- 58,000+ Construction Clients
- Avoid Jail Time and Costly Fines

- Encrypted
- Identifies All Davis Bacon Compliance Errors
- 80% Savings of Time and Money Compared to Manual Payroll Preparation



All New, Best-In-Class



3-PHASE SURGE PROTECTIVE DEVICES



MODELS	PHASE	VOLTAGE	SPD TYPE	AGENCY	ENCLOSURE	MAX SURGE
ICM530	3-PHASE	DELTA 240VAC or WYE 120/208VAC	TYPE 1 & TYPE 2	UL LISTED	NEMA 4X RATED	150,000 AMP
ICM531	3-PHASE	DELTA 480VAC or WYE 277/480VAC	TYPE 1 & TYPE 2	UL LISTED	NEMA 4X RATED	150,000 AMP
ICM532	3-PHASE	DELTA 600VAC or WYE 347/600VAC	TYPE 1 & TYPE 2	UL LISTED	NEMA 4X RATED	150,000 AMP
ICM533	3-PHASE	DELTA HIGH-LEG 120/240VAC	TYPE 1 & TYPE 2	UL LISTED	NEMA 4X RATED	150,000 AMP

View all ICM single & three-phase Power Protection Products @ www.icmcontrols.com

Company Profile:

COOLSHIRT SYSTEMS

Most companies think of heat stress as more of an inconvenience rather than the problem it truly is... right up to the point where it becomes too late. Why risk your workers' health and safety, not to mention the liability and costs associated with an emergency that could have been prevented. Instead of being reactive, be proactive with COOLSHIRT SYSTEMS liquid cooled garments. The use of COOLSHIRT SYSTEMS products allows your workers to maintain a safe core body temperature while in hot environments. This leads to keeping the user safe while maintaining productivity with fewer chances for mistakes.

There are four ways to lose body heat when your temperature runs too high; Radiation, Convection, Conduction and Evaporation. When your core temperature rises above 95 degrees, radiation, convection, and conduction do not work and perspiration is all you have left. Half of your body's blood moves to the skin to produce perspiration; now your vital organs, including your brain are functioning on half the blood supply they would normally need. This can lead to poor decision making, mistakes and fatigue. Heat exhaustion occurs when you lose 2 percent of your body weight through perspiration. COOLSHIRT'S liquid cooled garments covers over 40 percent of your body and is designed to cool the blood next to the skin, allowing the normal blood flow to reach your vital organs needed most under stages of duress. If a person suffers from a heat related illness, they are more susceptible to suffer again in the future. Taking preventive measures while working in hot conditions is essential.

Employers need to be mindful of the "heat index", a single value that takes both temperature and humidity into consideration. The higher the heat index, the hotter the weather feels. Heat index can be a better measure than air temperature alone for estimating the risk to workers from environmental heat sources. Under the OSH Act, employers have a duty to

protect workers from recognized serious hazards in the workplace, including heat-related hazards. Providing your workers with the necessary tools to complete their job safely, while also establishing and enforcing work/ rest schedules can be the difference between an employee going to the emergency room or going home after a successful day on the job.

Since 1987, COOLSHIRT SYSTEMS has grown exponentially to become the world leader in personal cooling systems. Using NASA study guidelines, COOLSHIRT active cooling systems help people manage body heat in extreme environments using circulating temperature-controlled cool water. COOLSHIRT SYSTEMS designs and creates liquid cooled garments for a variety of situations and industries. With proven success in cooling applications such as: Motorsports, Medical, Film/FX, Fire/EMS/ Hazmat & Industry; COOLSHIRT offers a variety of garments, portable and stationary cooling systems to fit all your cooling needs.

The COOLSHIRT Industrial Division specializes in products for just one to many workers. From a portable backpack system to a multi-person rehab station, there is a solution for your situation. The company has recently worked with well-known compliance coordinators & safety professionals to develop a cutting-edge system designed specifically for line workers. The Mobile Cool A.R.C. system includes a 70E Arc rated cooling garment with a portable system designed by line workers for line workers. With this system's proven success with major power companies, it shows that COOLSHIRT SYSTEMS has a solution for any worker performing in extreme environments. COOLSHIRT SYSTEMS continues to help companies take care of their employees proactively by providing them with tools needed to keep productivity up, finish the job and return home safely.

www.coolshirt.com •

"As a safety professional, you always want your workers to have access to leading edge safety tools that improve safety and focus.

Working with **COOLSHIRT SYSTEMS** over the past two years allowed me to help design a tool **by lineman for lineman.**

The **A.R.C. Hybrid Cooling System** by **COOLSHIRT SYSTEMS** allows lineman to remain more focused and less fatigued by reducing their core body temperature in extreme environments, therefore reducing the possibility of unintended accidents."

-James "Jim" Bonner
Compliance Coordinator- Retired
Alabama Power



A.R.C. Hybrid Cooling System

Complete Arc Rated Portable Cooling Solution

Developed in conjunction with major power companies for use in extreme heat conditions, the **A.R.C. Hybrid Cooling System** uses liquid cooling to reduce fatigue, injury, and heat stress related illness.

Designed specifically for use by linemen, the **A.R.C. Hybrid Cooling System** features a compact design with a custom woven strap mounting system. The use of S-hooks offers the versatility of mounting inside or outside of the bucket.

Designed with portability in mind, measuring **6" x 6" x 20"** and weighing in at **less than 10 lbs dry**. The unit is entirely self-contained and built to last with a 20,000 hour pump.



A.R.C. Hybrid Cooling System
2002-0017



COOLSHIRT
TEMPERATURE CONTROLLED GARMENTS

Ad Index

Company	Pg.	Website
Asher & Sons	19	www.alasher.com
Buccaneer Rope	16	www.bucrope.com
Can Do	12	www.candointl.com
Coolshirt	35	www.coolshirt.com
Copper Weld	31	www.copperweld.com
Critter Guard	28	www.critterguard.org
Emars	33	www.emarsinc.com
EDE Electric	2	www.edeinst.com
EvLuma	1	www.evluma.com
GoLight	29	www.golight.com
Greaves	7	www.greaves-usa.com
Hogg Davis	23	www.hoggdavis.com
iToolCo	IBC	www.itoolco.com
ICM Controls	6	www.icmcontrols.com
Krenz Vent	24	www.krenzvent.com
LEDvance	4, 5	www.ledvanceus.com
Light Pole Base	13	www.lightpolebase.com
Lite Line	32	www.liteline.com
Maddox	3	www.maddoxtransformer.com
NECA	8	www.necaconvention.org
Penn Aluminum	27	www.pennconduit.com
Powersight	20	www.powersight.com
Randl Inc	21	www.randl-inc.com
Resa Power	BC	www.resapower.com
Sky Hook	9	www.skyhookmfr.com
Tallman	25	www.tallmanequipment.com
Tasco Inc	24	www.tasco-usa.com
Vivax Metrotech	6	www.vivax-metrotech.com
Voltec	36	www.voltec.com
Windsor Wire	IFC	www.windsorwireco.com
X Insurance	17	www.xinsurance.com



MADE IN USA

EXTENSION CORDS



RED > WHITE > BLUE

SJTW SUPER-FLEX Jacket

-94° F TO 221° F

EXTREME

SJE00W EXTREME TPE Jacket

Lighted End

Various Gauges

Various Lengths

Proudly Made In USA



EXTREME VIDEO

INNOVATIONS

Faster Safer Workspace

iTOOLco.



ALL JACK™

Increase productivity and decrease fatigue using iTOOLco's All Jack™. Install pipe, lights, cabinets, drywall, temporary dust barriers and much more with this innovative jack designed to lift and support the weight of your workpiece while you anchor it into position.

High ceilings and ladder work are not a problem for this dynamic tool. Reach from 58" to a staggering height of 13'6". The industrial gas shock ensures a snug, stable support that stays in place while you complete the installation. Once your workpiece is secured into place, simply remove the All Jack™ by releasing the shock. More powerful than a typical support pole, the All Jack's gas shock can handle your most challenging jobs.



SCAN QR

CORDLESS CANNON 3K™

Speed, Versatility, and performance are all yours with iTOOLco's Cordless Cannon 3K™. This portable 3,000 lb. puller is intuitively designed to handle all of your day-to-day wire pulls.

The built-in capstan switch automatically turns the puller on and off. Simply tug on the rope to start the pull and slack off the rope to shut it down.

Delivers dynamic performance in remote locations or areas where power is not yet available.

The high-capacity rechargeable battery is long-lasting and delivers maximum power.

The Cannon 3K™ will even chew through a medium size run of 4 - 350 in 3" conduit with 4 - 90s 220' long in record time and still have half the battery life for your next pull.

SCAN QR



FOLLOW US:



RESA POWER™

Reliable and Safe. The Power of Us.



SCAN ME

TRANSFORMER SERVICES,
ASSEMBLY, COIL REWINDING,
OIL TESTING LAB & PORTAL

BROAD INVENTORY OF
ELECTRICAL EQUIPMENT &
COMPONENTS INCLUDING
OLDER VINTAGE & HARD-TO-FIND

ACCEPTANCE TESTING,
MAINTENANCE & REPAIR SERVICES



resapower.com

RESA Power is the premier national
provider of mission-critical
power system solutions.

ELECTRICAL CONTRACTOR SUPPORT SERVICES BY RESA POWER

RESA Power's suite of electrical contractor support services and products provides our customers with the assistance they need for new and existing electrical system solutions. Contact us today to learn how we can help you achieve the goals of your next project.

www.resapower.com



Network with us on LinkedIn and follow us on social media as we routinely publish the most recent company news, share best practices, post open jobs, and more.

JOIN OUR TEAM

WE ARE HIRING!

WWW.RESAPOWER.COM/CAREERS

#RESAPOWER #WhyWorkAtRESA #ThePowerOfUs